

Organized by :



Hosted by :



FLORIS

EXPO 2025



Organized by :



Hosted by :



FLOII EXPO 2025

Welcome!

To the echanting the world of plants.

The first and largest International - scale ornamental plant exhibition in Indonesia. **FLOII (Floriculture International Indonesia) Expo**. It serves as a platform where businessplayers, plant enthusiasts, and hobbyists from across the country come together. FLOII Expo aims to meet market demands and promote the latest trends in the plantindustry.

More than just a space for networking and trade, FLOII Expo acts as a budding ecosystem for the ornamental plant industry, inviting businesses to grow together, nurture andscale their ventures, and pursue the dream of bringing Indonesia's floriculture to the global stage.

In 2025, FLOII Expo will focus on exploring the diversity of ornamental plants and advancing the future of horticulture with the Theme "**The Botanical Future**".

EVENT DETAILS

Organized by :



Hosted by :



Date

23 - 26 October 2025

Location

Hall 5, ICE BSD - Tangerang

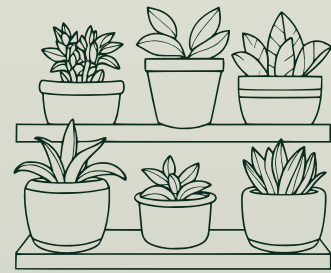
Exhibitor

More than \pm 150 exhibitor

Visitor

Estimated \pm 15.000 visitor

Pre-Event



Event Collab with
Community

Show Day



Exhibition



Talk Show



Workshop



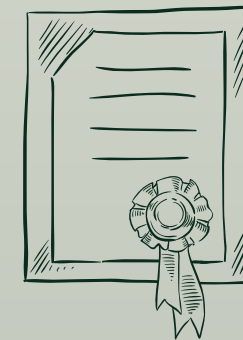
Plant Contest /
Competition



Product Launching
& Presentation



Auction



Awarding

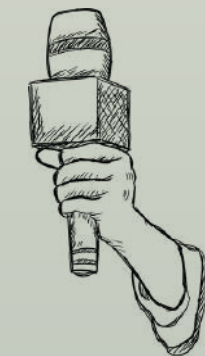


Community
Meet-up

New Programs



Landscape Showcase



Art Workshop & Performance



Organized by :



Hosted by :



EXHIBITOR INFORMATION



Organized by :

Hosted by :



Show Days

Date	Time (WIB)	Activities
OCT 23th – 26th, 2025	09.00 – 10.00	Main Entrance open for Exhibitors with ID Pass
	10.00 – 12.00	OPENING CEREMONY
	10.00 – 21.00	Exhibition open for public

Loading Out

Date	Time (WIB)	Activities
OCT 26th, 2025	21.00 – 00.00	Exhibitor move out
	00.01 – 03.00	Booth dismantle and removal

Organized by :



Hosted by :



EXHIBITION REGULATION

PROMOTION

1. Participants are permitted to carry out independent promotions during the exhibition.
2. The organizer reserves the right to take necessary actions if a product demonstration is deemed to pose a safety risk to the exhibition area, disturb visitor comfort, or violate the applicable rules.
3. Participants must respect neighboring booths by limiting sound systems to a maximum of 64 dB and ensuring that displayed products do not disrupt visitor comfort or access. The sound system should be positioned to direct sound inward toward the booth.

DO'S



DON'TS





PAYMENT REGULATION

1. Participants are required to conduct all transactions using the Indonesian Rupiah (IDR)
2. Participants are allowed to use payment systems such as cash, EDC, or any other payment gateways as needed by each tenant.

Organized by :



Hosted by :



Organized by :



Hosted by :



INTERNATIONAL INFORMATION

INFORMATION IMPORT

Organized by :



Hosted by :



1. Pre-Exhibition Requirements

a. Product Eligibility

- Only approved plant species are allowed to be imported and sold.
- Please inform us in advance with:
 - Scientific name and common name of each plant
 - Quantity and packaging details
 - Country of origin

b. Import License

- You may appoint a local importer or official freight forwarder with an import permit (API-U) and NIB.
- Alternatively, the event organizer can assist with temporary import permits, if available.

c. Phytosanitary Certificate

- A valid Phytosanitary Certificate must be issued by the authorized plant quarantine agency in the country of origin.
- The certificate must state that the plants are free from pests and diseases.

INFORMATION IMPORT

Organized by :



Hosted by :



2. Shipment & Entry Port

- Shipments must be routed to an official port of entry with plant quarantine services, such as:
 - Soekarno-Hatta International Airport (CGK)
 - Tanjung Priok Port (Jakarta)
- All shipments must arrive no later than [4 days] before the event date for inspection and clearance.

3. Inspection & Quarantine

- Upon arrival, the plants will be inspected by Balai Karantina Pertanian (Plant Quarantine Office).
- Possible procedures include:
 - Physical inspection
 - Laboratory testing (if necessary)
 - Holding in quarantine or fumigation
- Clearance may take 3-7 business days.

INFORMATION IMPORT

Organized by :



Hosted by :



4. Temporary Import vs Permanent Import

- If plants will be sold during the event → permanent import process is required.
- If plants are for display only and will be returned, organizer can help apply for temporary import with customs guarantee.

5. Prohibited Items

- Some plants or soil-related items may be restricted or prohibited depending on the current plant health risks.
- Please refer to the updated list from the Indonesian Quarantine Office.

6. Onsite Sales Regulation

- All plants for sale must:
 - Have passed quarantine inspection
 - Be labeled clearly with name, origin, and certificate number
 - Be sold in accordance with local horticultural sales rules

INFORMATION IMPORT

Organized by :



Hosted by :



7. Reference vendors Freight Forwarder

- Appointed forwarder/importer for clearance
- Document handling
- Liaison with plant quarantine officials

Organized by :



Hosted by :



SEE YOU AT

FLORIS

EXPO 2025

